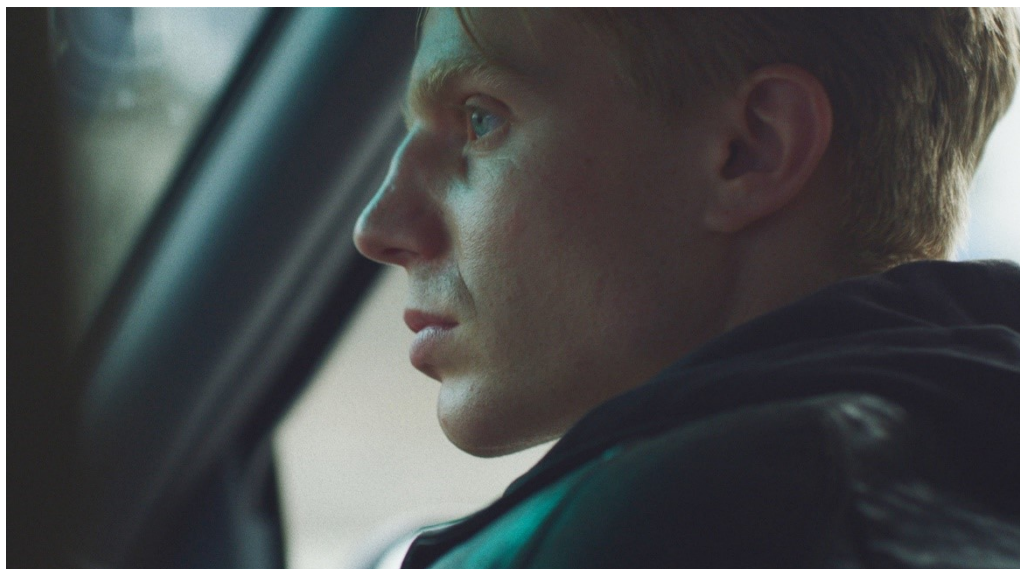


JACKED

AFTER WATCHING THE FILM



Picture: Danish Film Institute

Analytical and thematic approach

1. Plot summary

Give a summary of the film, focusing on specific instances where the two main characters make choices. Make a list of other choices they could have made.

2. Setting and environment

- a. Where does the story take place geographically? Find evidence in the film to support your claim.
- b. What social environment do our two main characters come from? Find evidence in the film to support your claim.

3. Characterisation

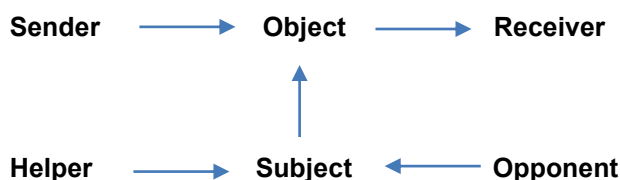
Characterise the two main characters, Russell and Waylen. Find frame grabs in the film to substantiate your arguments:

- a. What impression do you get of the two characters and their relationship in the beginning of the film?
- b. How does your impression of the characters and their relationship evolve during the film? What causes this change?
- c. Characterise the way the two characters speak, the way they dress, their facial expressions and their actions.
- d. Explain how the point of view changes during the film and what significance that has.

4. Actantial model

Analyse the film, using the [actantial model](#). Alternately place Russell, Waylen and the man on the tape in the subject's position.

==
FILM



5. Symbolism

What [props](#) in the film have symbolic significance? List the objects and their significance.

6. Theme and message

In groups of three, argue which theme best fits the film. Person 1 will argue for **existentialism**, Person 2 will argue for **fate** and Person 3 will argue for **nature vs nurture**. Find as many arguments as you can. In your discussion, use as many of the following phrases as possible.

That is a good point, but I have to disagree...	That makes sense, but if you look at it from a different perspective, you could say...	That may be true, but...
I am not sure I agree with you on that...	I find it difficult to agree with you on that point because...	That might be the case, but ___ is a more likely argument.
In principal I agree, but...	But don't you think that...	I see what you mean, but...
On the whole, I agree with you, but it could also be said that...	There is some truth to what you say, but I believe that...	I am not entirely convinced by your argument because...

7. Discussion

In the film Waylen says, "You can tell a lot about a man by his music" (frame grab 03:24). Discuss the following:

- What else defines the characters in the film?
- What defines a person's character in general?
- Are we born with such traits or do we grow into them?

Cinematic approach

8. Applying cinematic terms

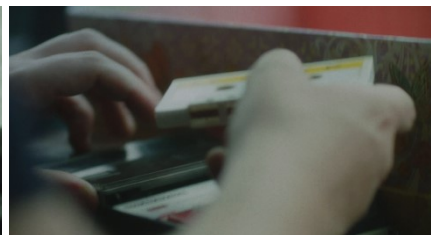
Analyse the film, focusing on the most important cinematic elements. Find specific frame grabs to substantiate your arguments. You can use the frame grabs below.

- From what [point of view](#) is the film shot: through the characters' eyes or in an [over-the-shoulder shot](#)? What effect does the point of view have on how we see the events and the characters, and on how the viewer is engaged in the action?
- What [camera angle](#) is used, does it change during the film and what effect does it have?
- What [camera distances](#) are used in the film? Where do they change, and what are the effects of those changes?

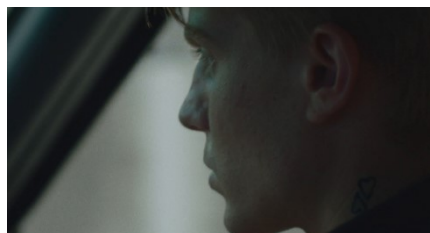
- d. Analyse the connection between the film's auditory elements ([music](#) and [speech](#)) and visual elements (all of the above). Do they conflict or support each other?



Frame grab 00:53



Frame grab 05:09



Frame grab 07:03



Frame grab 08:30

9. Dramaturgy

Make a timeline to visualise how, when and why the film's tension builds. Find specific frame grabs in the film to illustrate the following cinematic terms: [teaser](#), [presentation](#), [elaboration](#), [point of no return](#), [conflict escalation](#), [climax](#) and [resolution](#).

10. Creative assignment

Inspired by your summary of the alternative choices the characters could have made, draw and write a storyboard in groups of two, showing one of the main characters making other choices. When you are done, show your storyboards to the class and discuss which one represents a more likely course of action.

Grammatical and written approach

11. Contextual grammar

The following is an excerpt from a review of the film. In the chart below, identify the word class of the underlined words:

A thoughtful and interesting short, 'Jacked' is a contemporary study of crime and how it can affect so many people in a variety of ways. Bringing in the human element to this sometimes glorified aspect of society is certainly worth exploring, especially the perspective we are being offered by *Pannevis*. True these characters are morally flawed and unashamed when it comes to breaking the law, but the reality of their situation is as heartbreaking as the sombre lives they stumble upon on those tapes, brought to a depressing culmination by the film's end.

<https://www.ukfilmreview.co.uk/post/jacked-short-film>



	verb	noun	adverb	adjective	conjunction	pronoun	preposition
thoughtful							
affect							
variety							
this							
especially							
offered							
but							
reality							
sombere							
upon							

12. Written assignment

Write a paragraph of about 200 words, giving a possible reason why Wayne is so upset when he listens to the tape.

