

JACKED

WHILE WATCHING THE FILM



Picture: Danish Film Institute

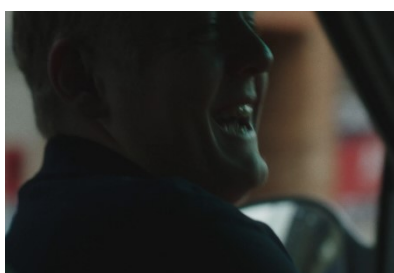
1. Watch and listen

Your teacher will play the first 2:28 minutes of the film. While watching the opening sequence, write down what effect the following things have:

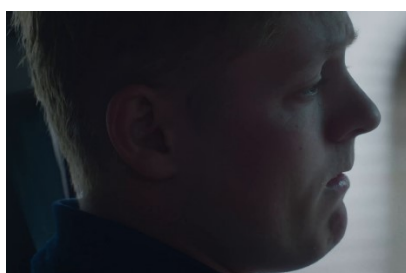
- The music
- Objects we zoom in on
- The lack of focus on the characters' faces
- Obstacles the characters encounter

2. Write 100 words on two frame grabs

Why do you think Waylen's facial expression changes? You must write in the present perfect tense.



Frame grab 04:58



Frame grab 06:46

3. Focus

Your teacher will play the film from the beginning. While watching the film, pay attention to how the two characters are portrayed. Note the choices they make, their relationship and the power balance between them.

FFM.V